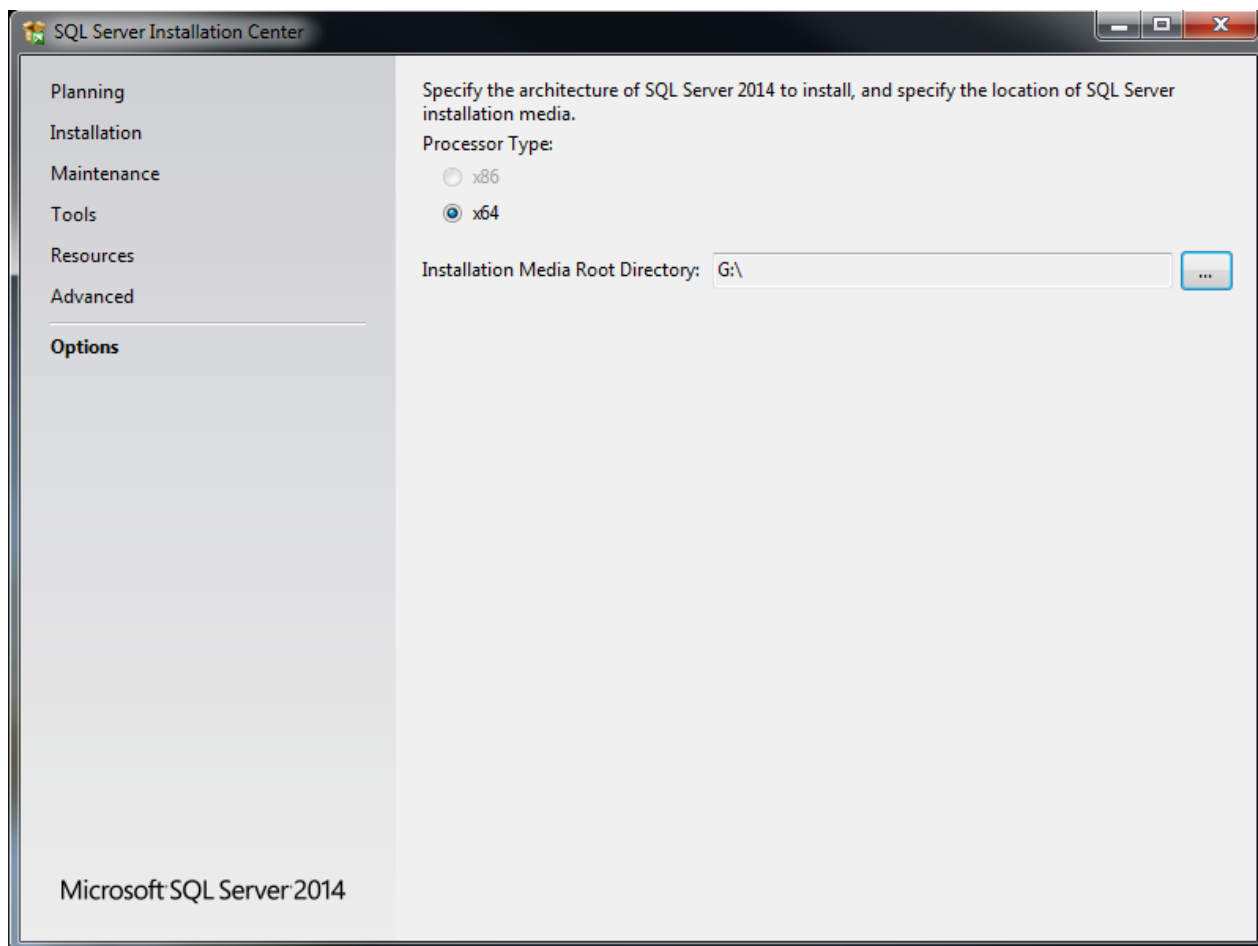
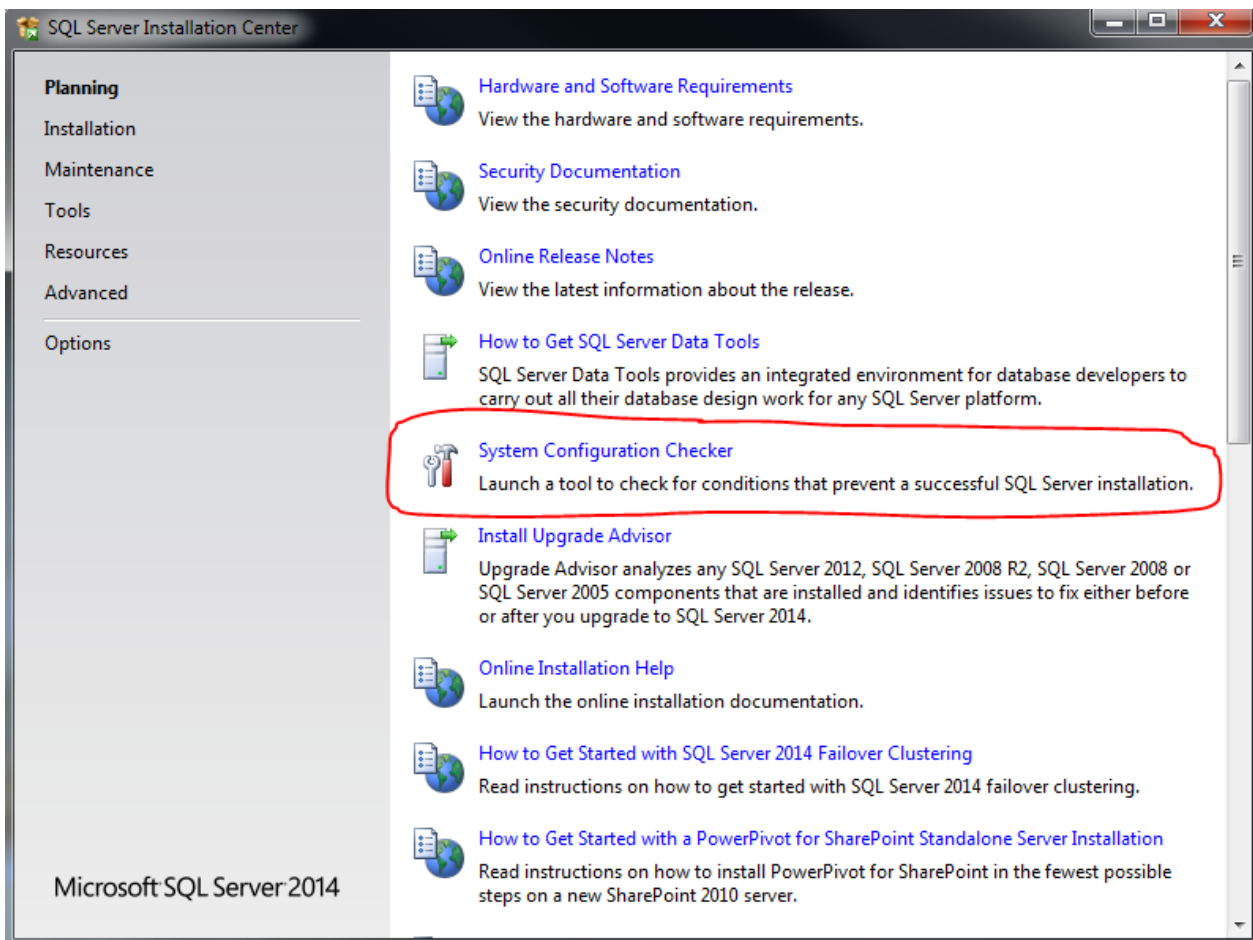


Installation of Microsoft SQL Server 2014 Enterprise Edition

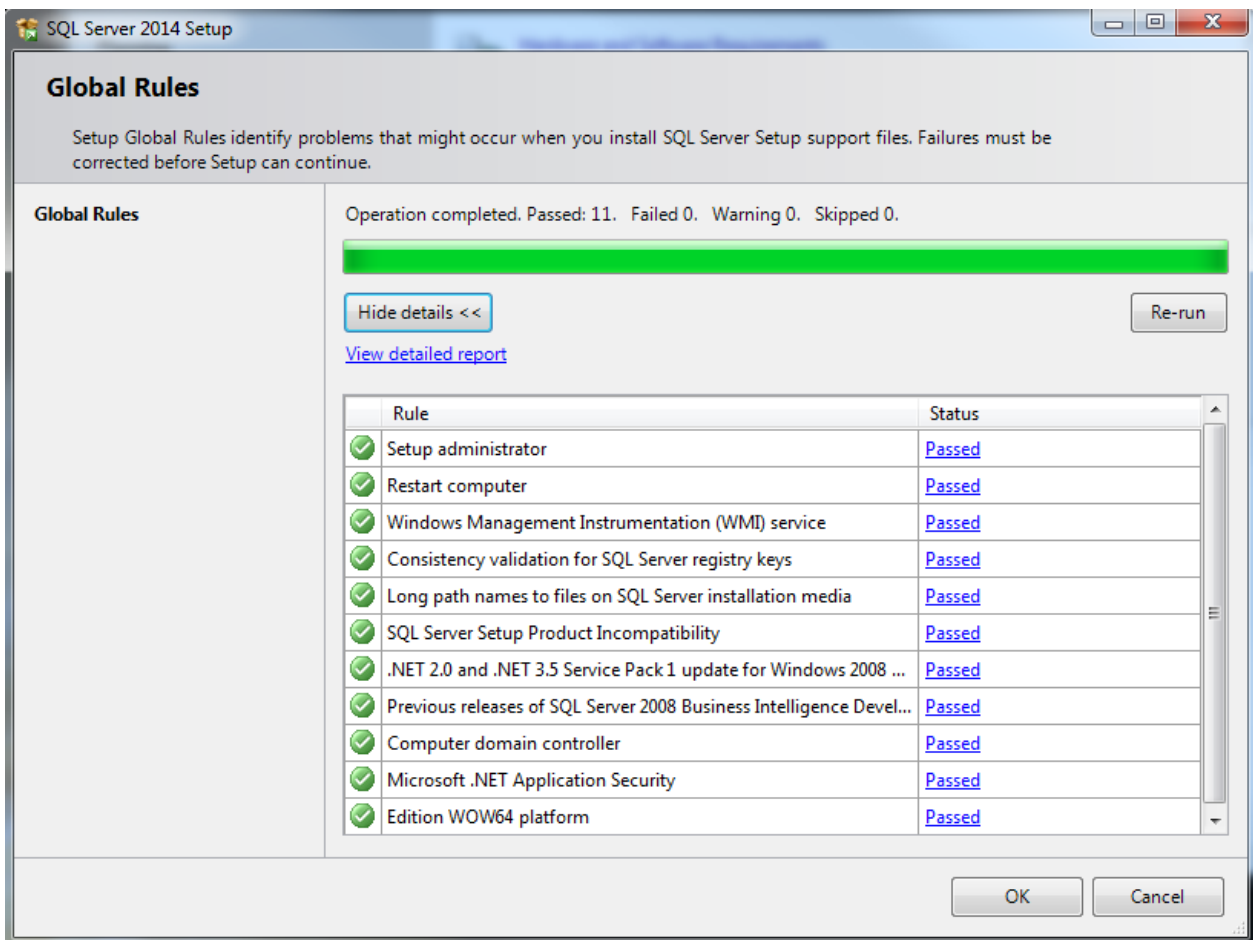
Browse the expanded SQL Server 2014 installation folder in Windows Explorer and click on the “setup.exe” file.



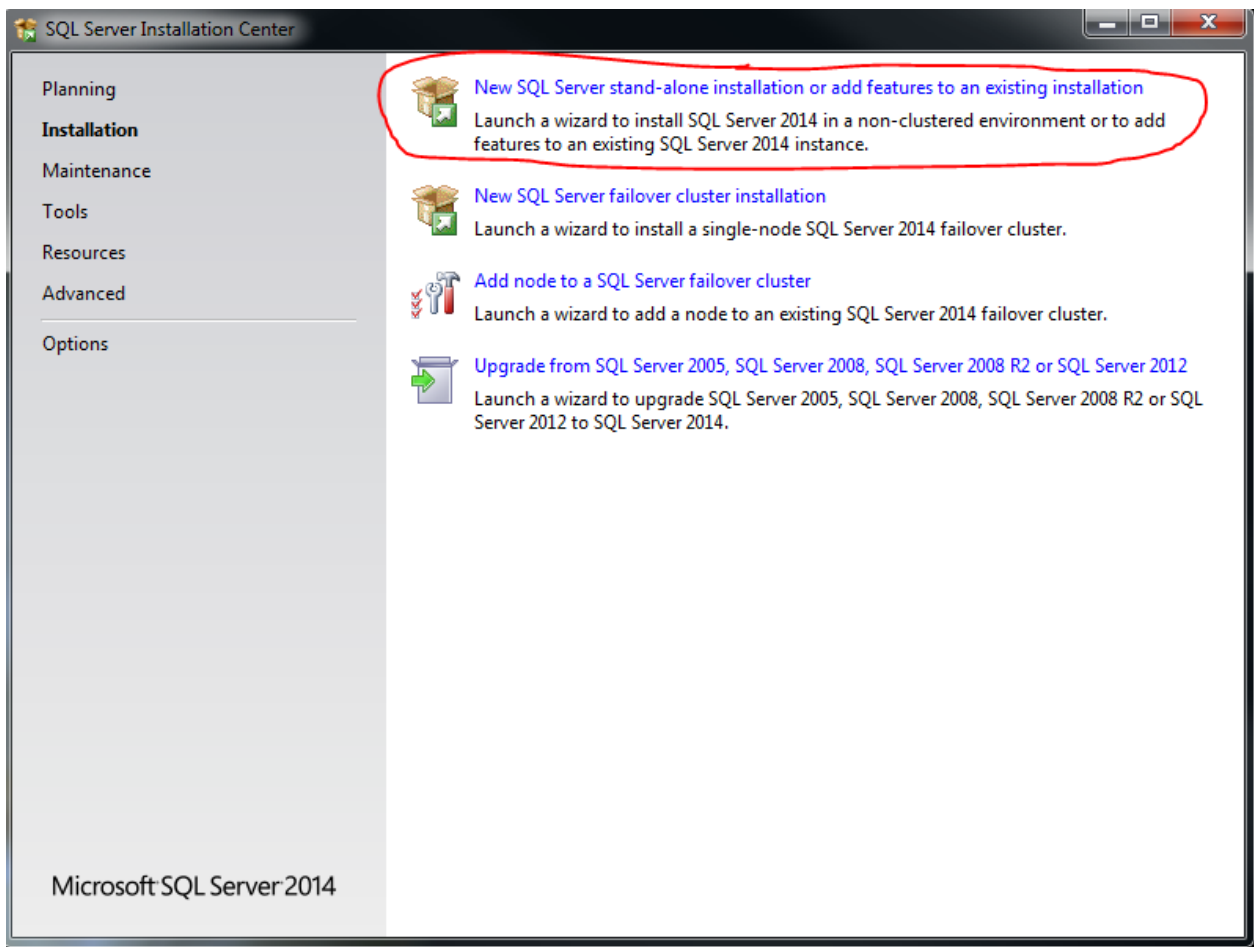
Click on “Options” on the left panel and choose the correct parameters at the right side Enterprise version (32-bit [x86] or 64-bit [x64]) as per your system architecture.



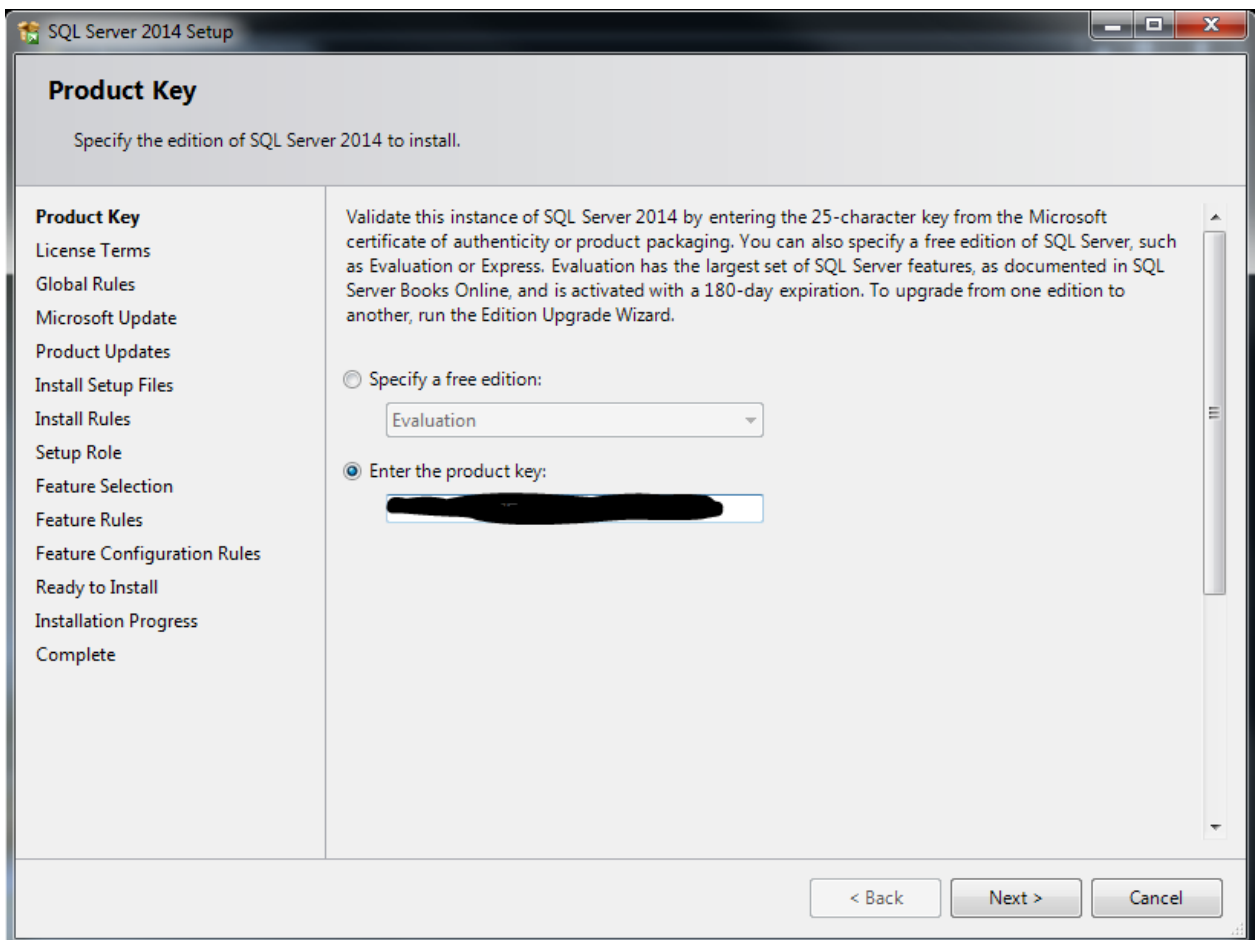
Click on “Planning” on the left panel and then click on “System Configuration Checker” at the right



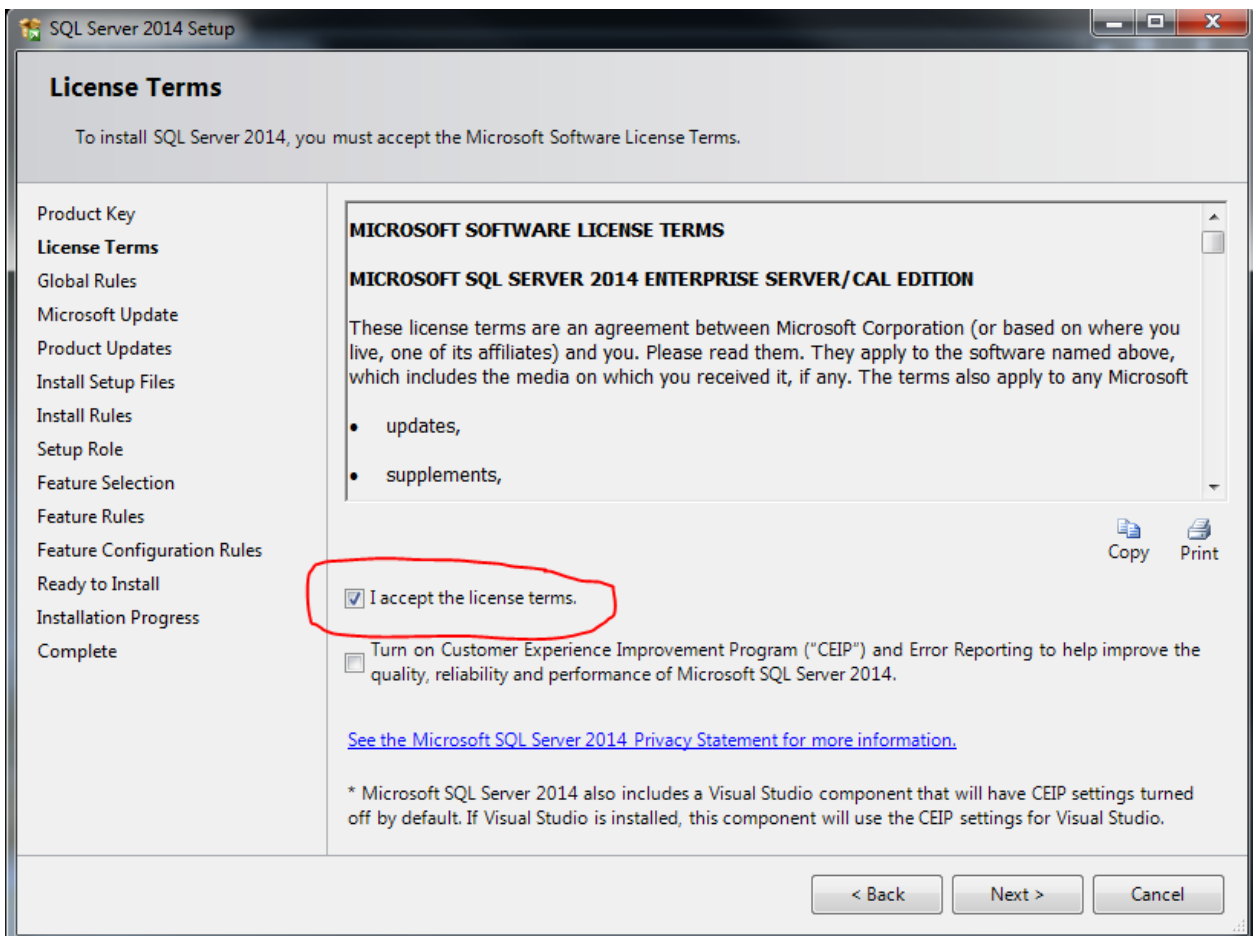
Click on “Show Details” to see the status of all system configuration checker tests then click on “OK”

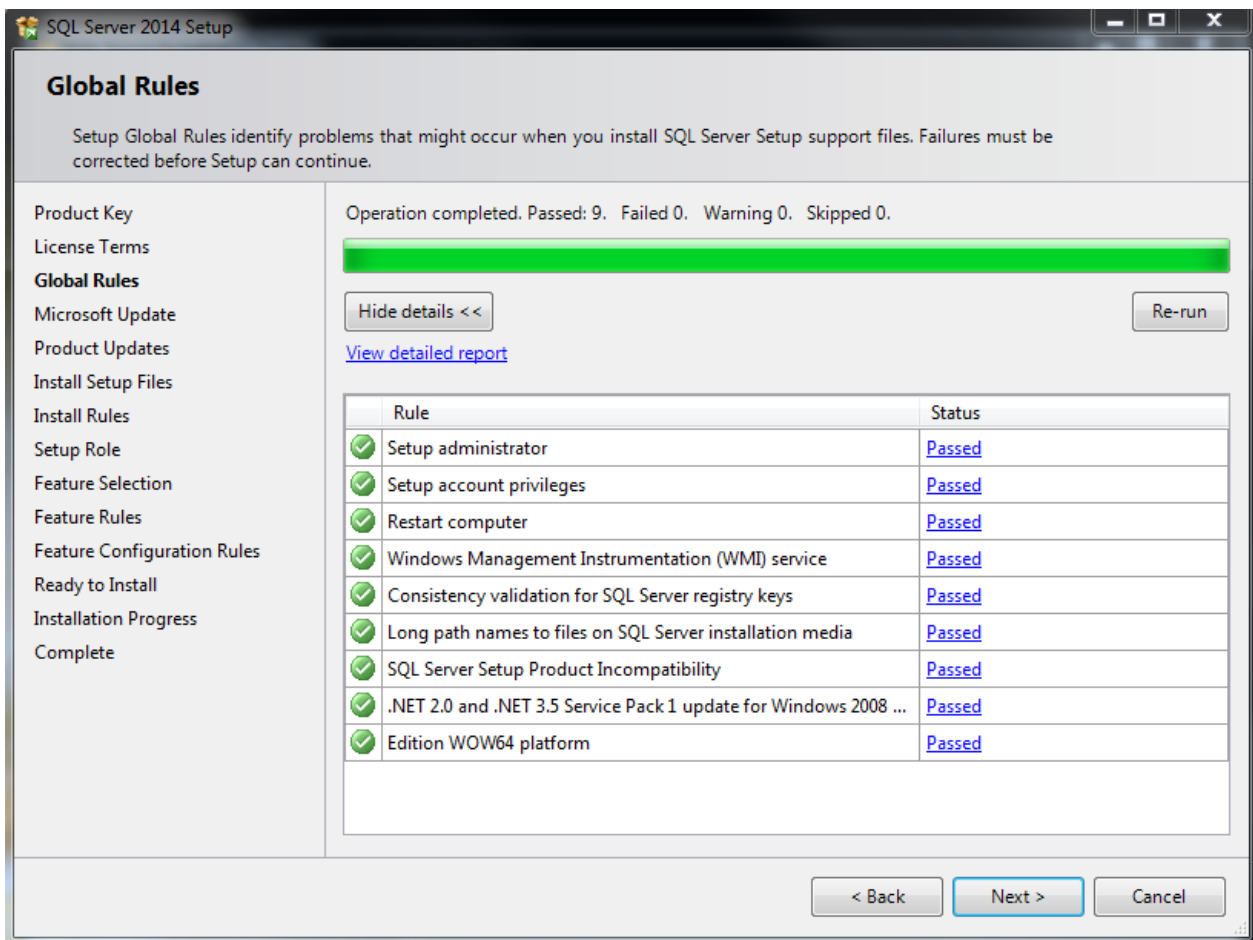


Click on “Installation” on the left panel and then click on “New SQL Server stand-alone installation...” at the right

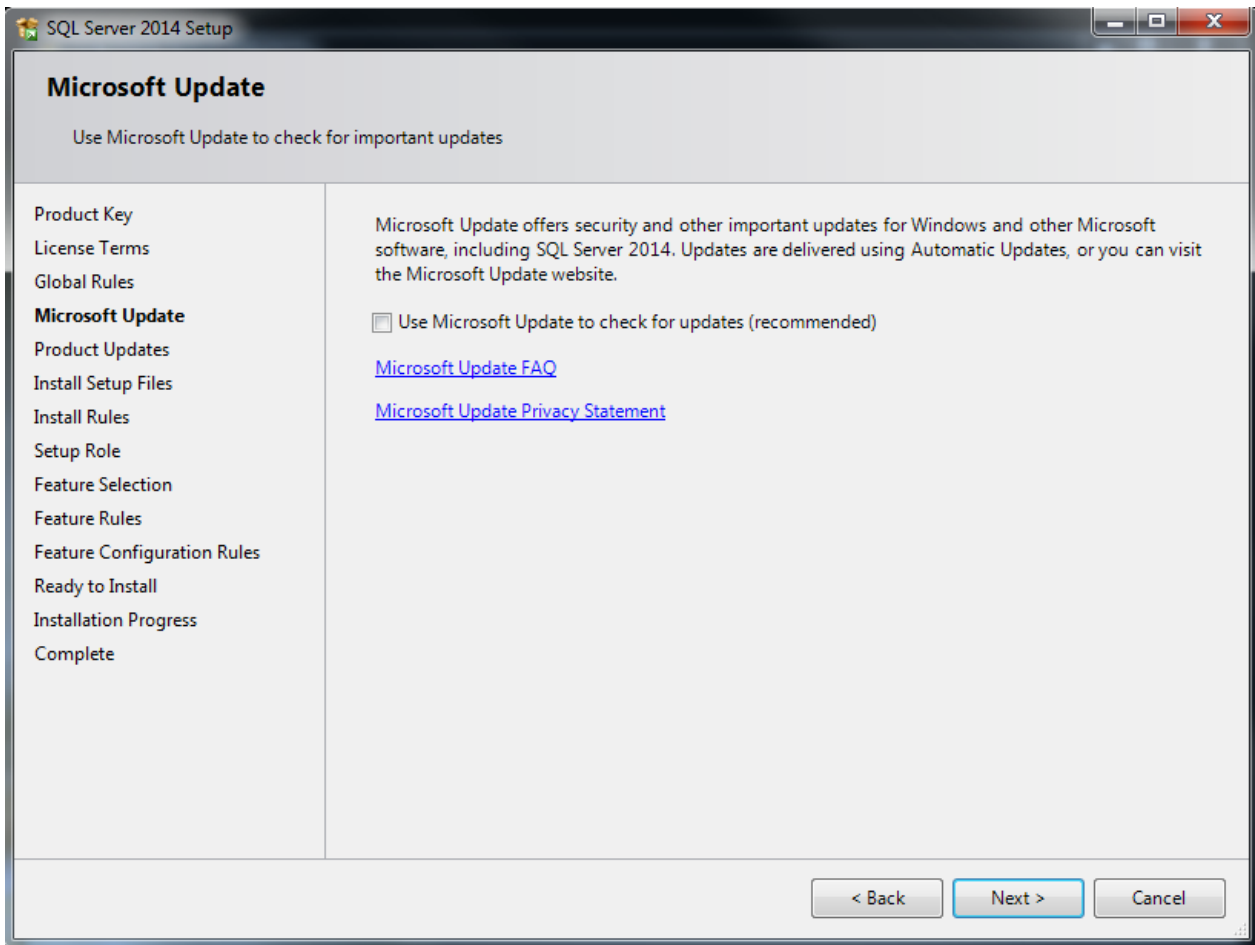


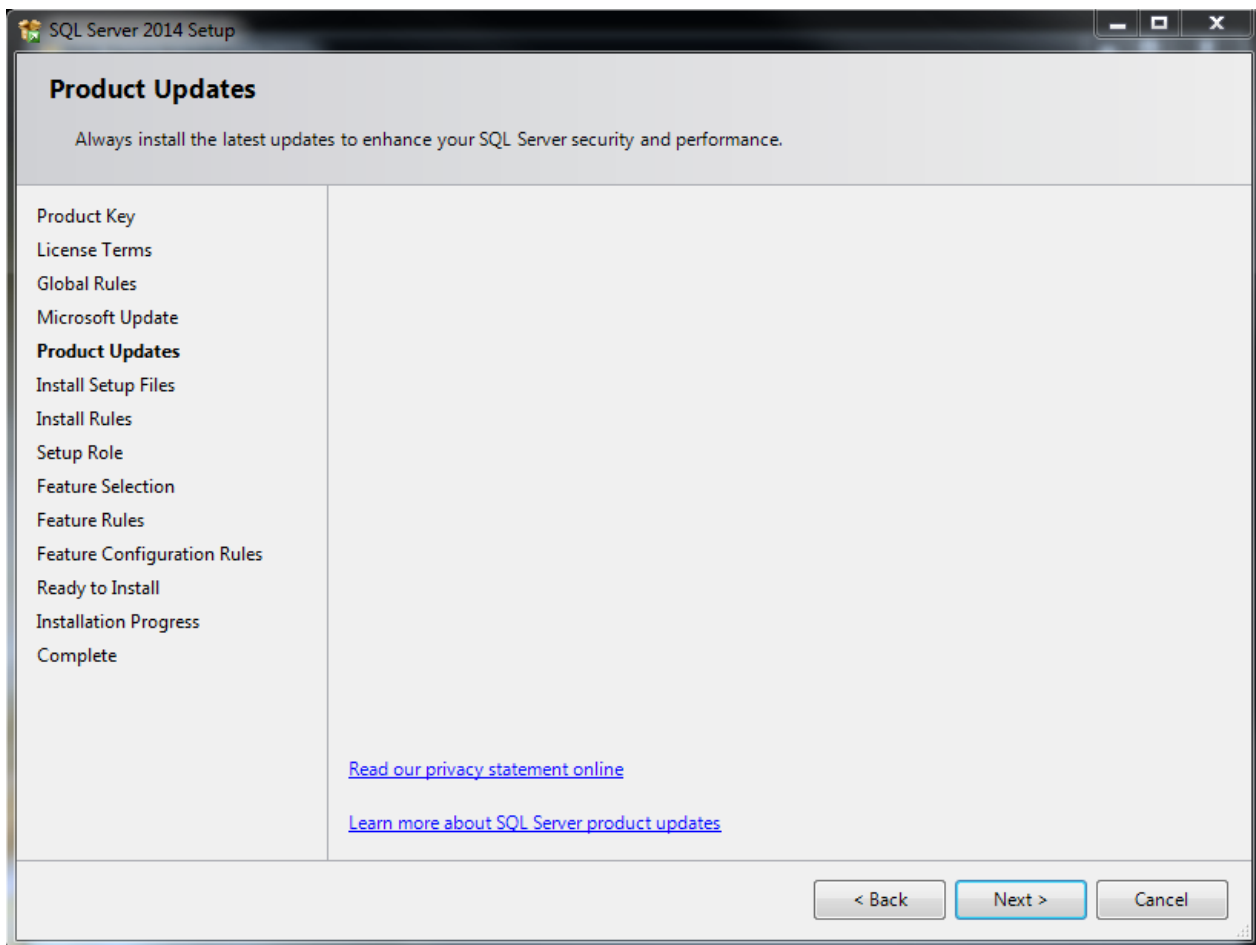
The product key will be filled in by the system automatically.



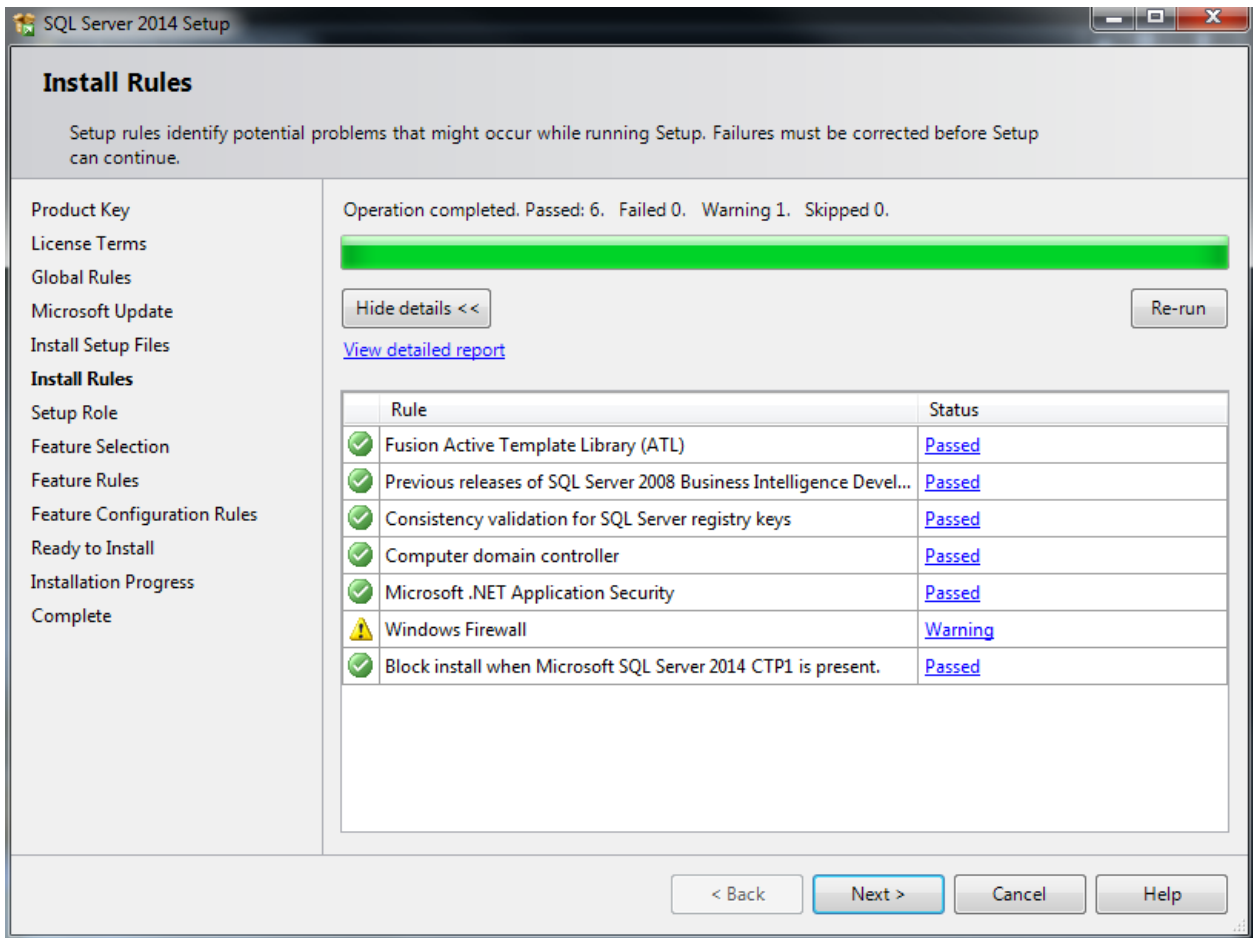


Click on “Show Details” to see the status of all global rules then click on “OK”

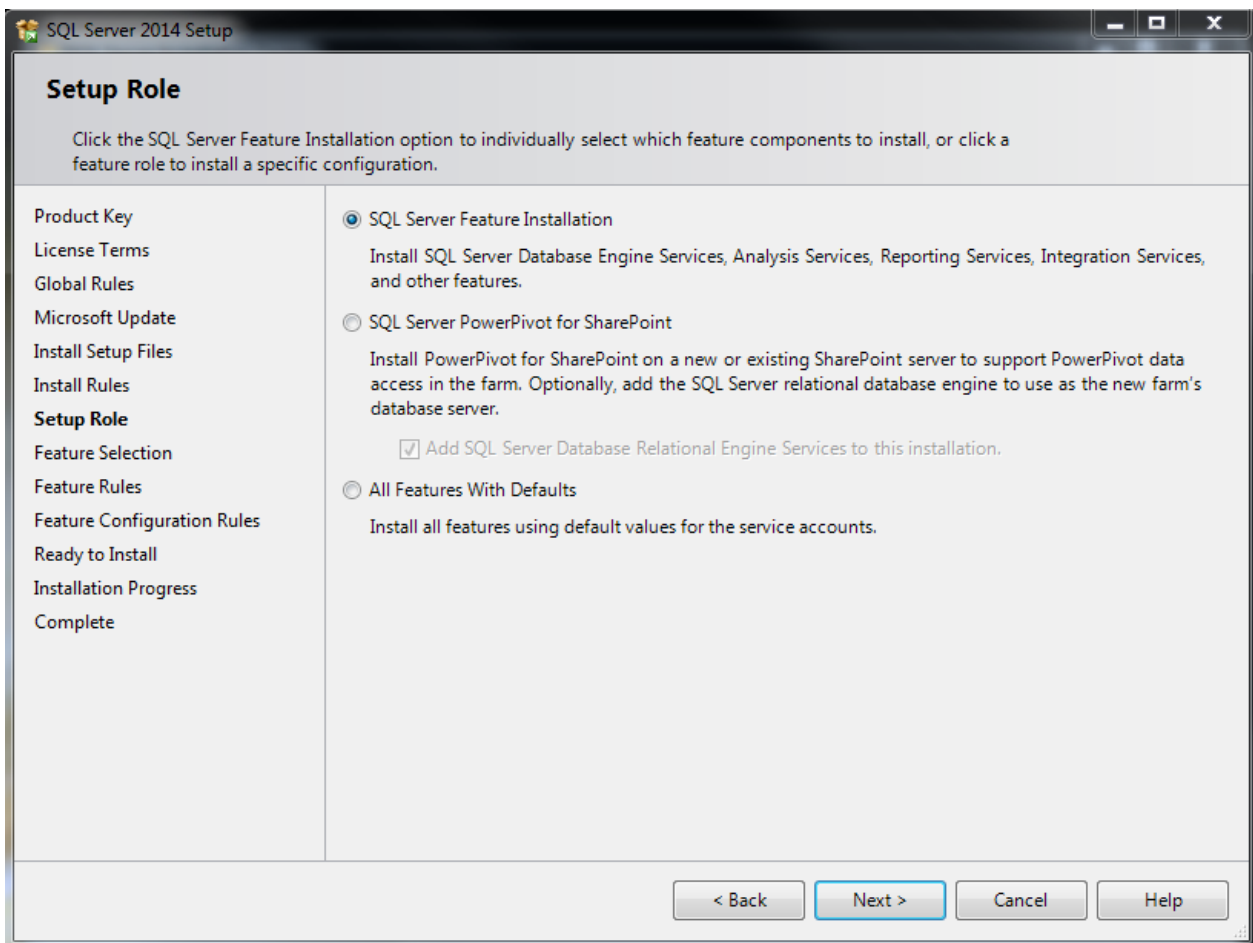




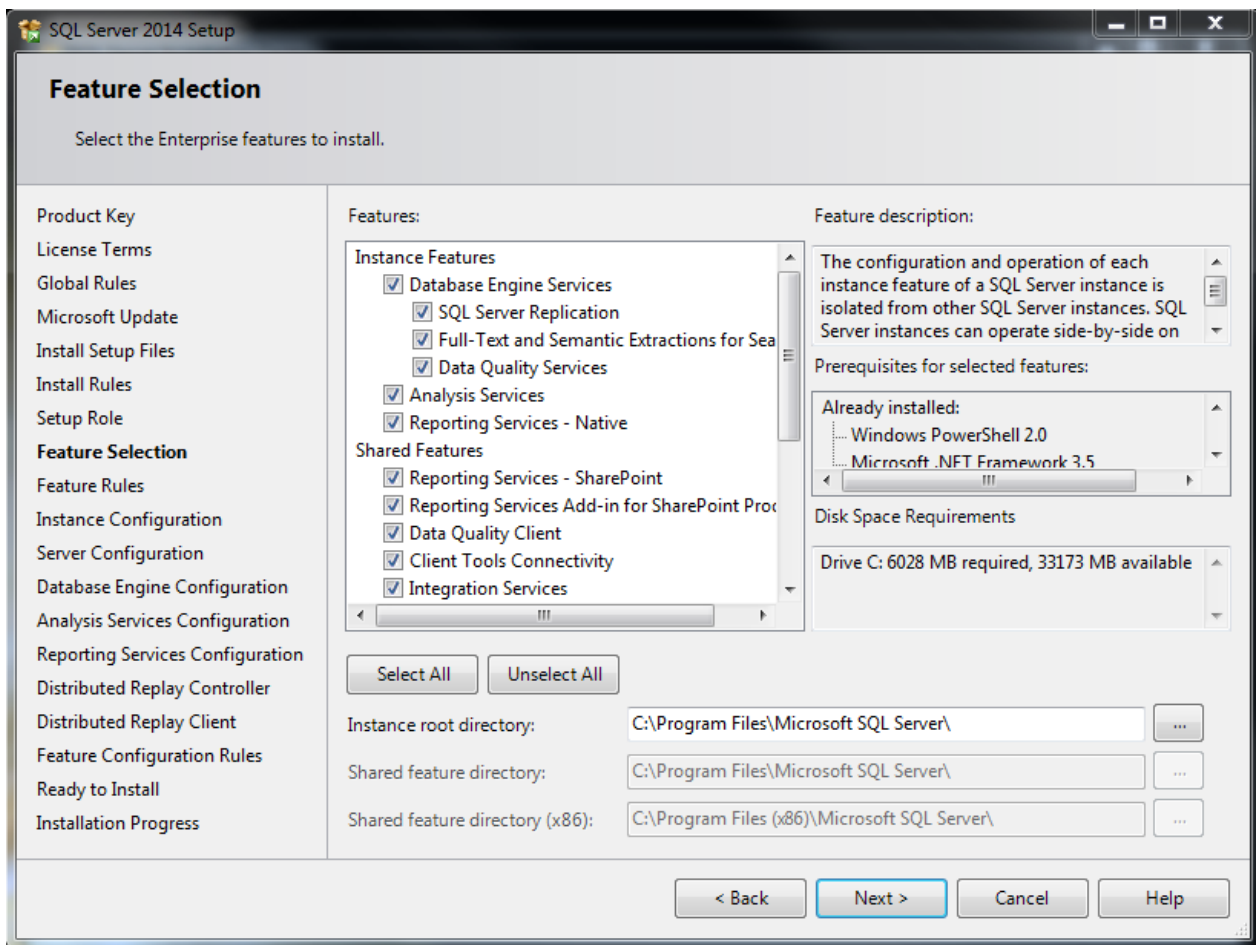
Since no product update is listed,
Click “OK”



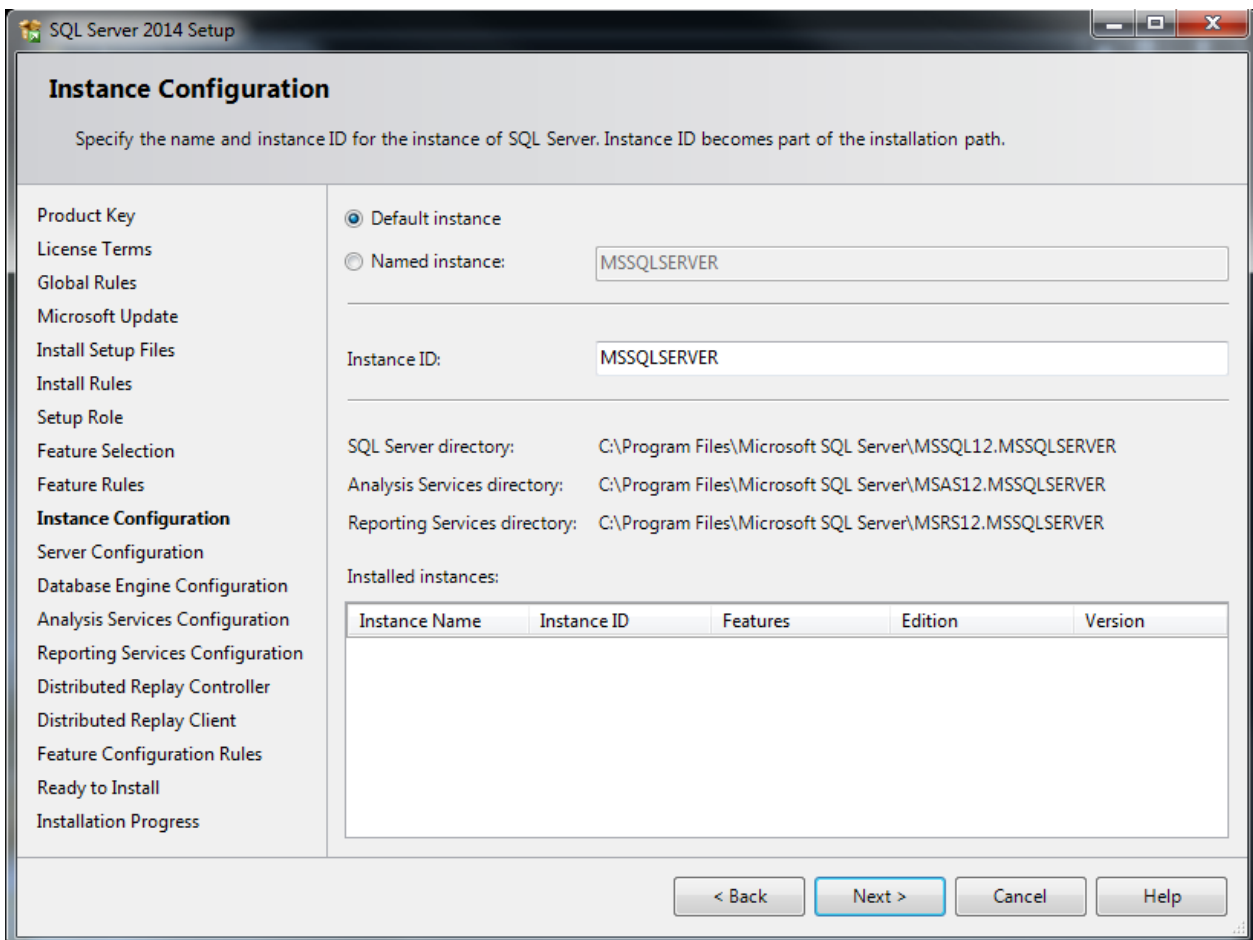
Click “Next”.



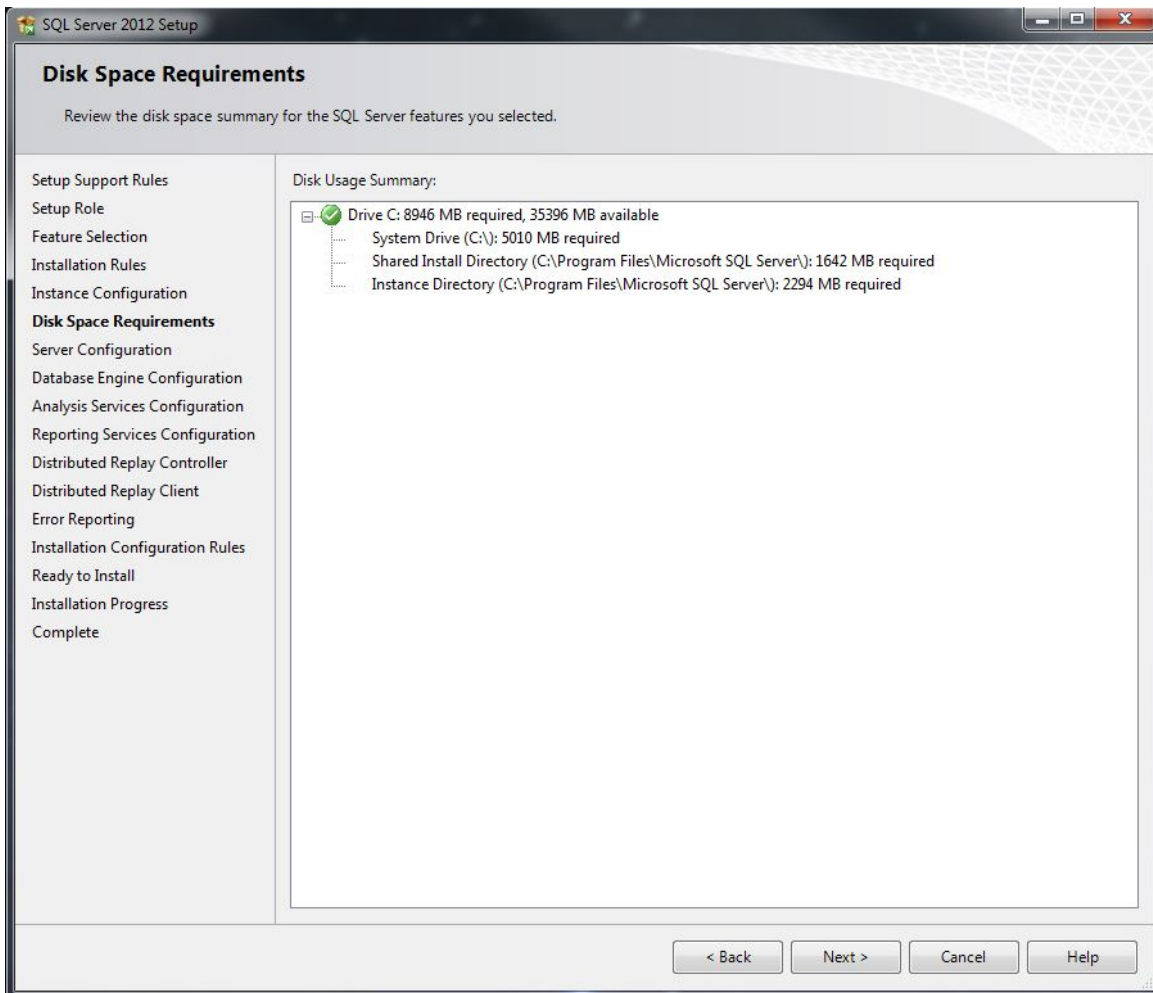
Click “Next”.

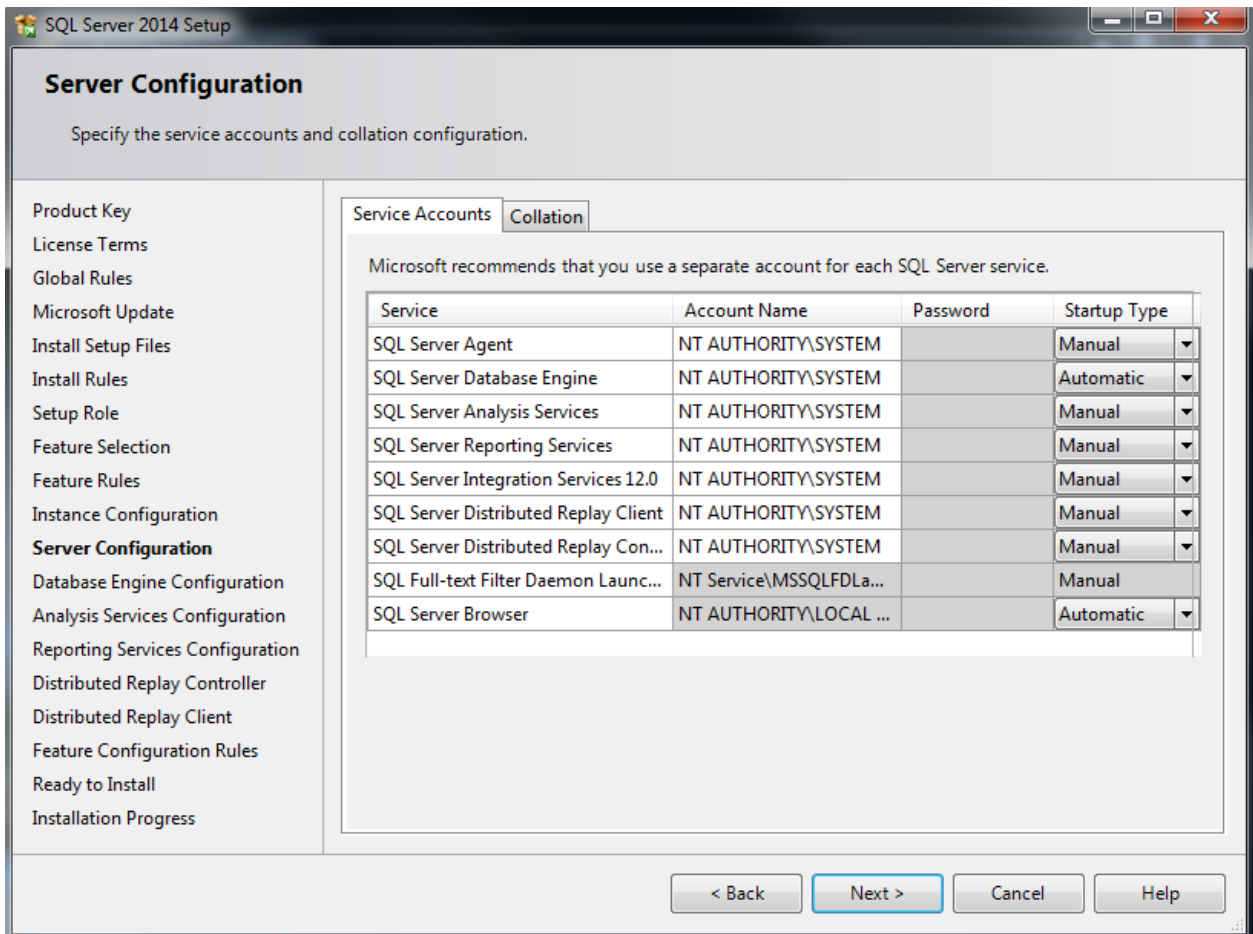


Click on “Select All” and then “Next”.

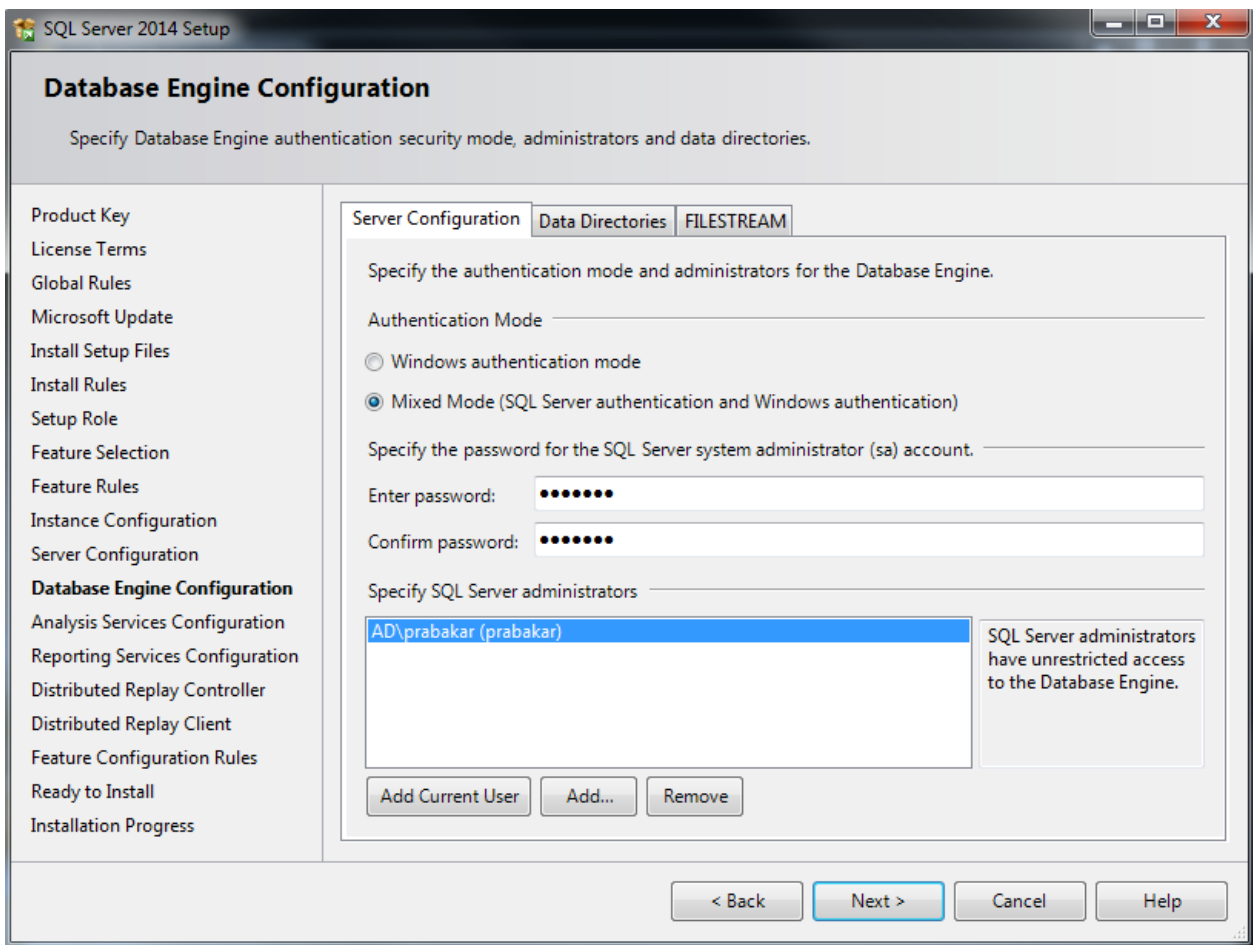


Choose “Default instance” for your SQL Server and use “MSSQLSERVER” as the servername.

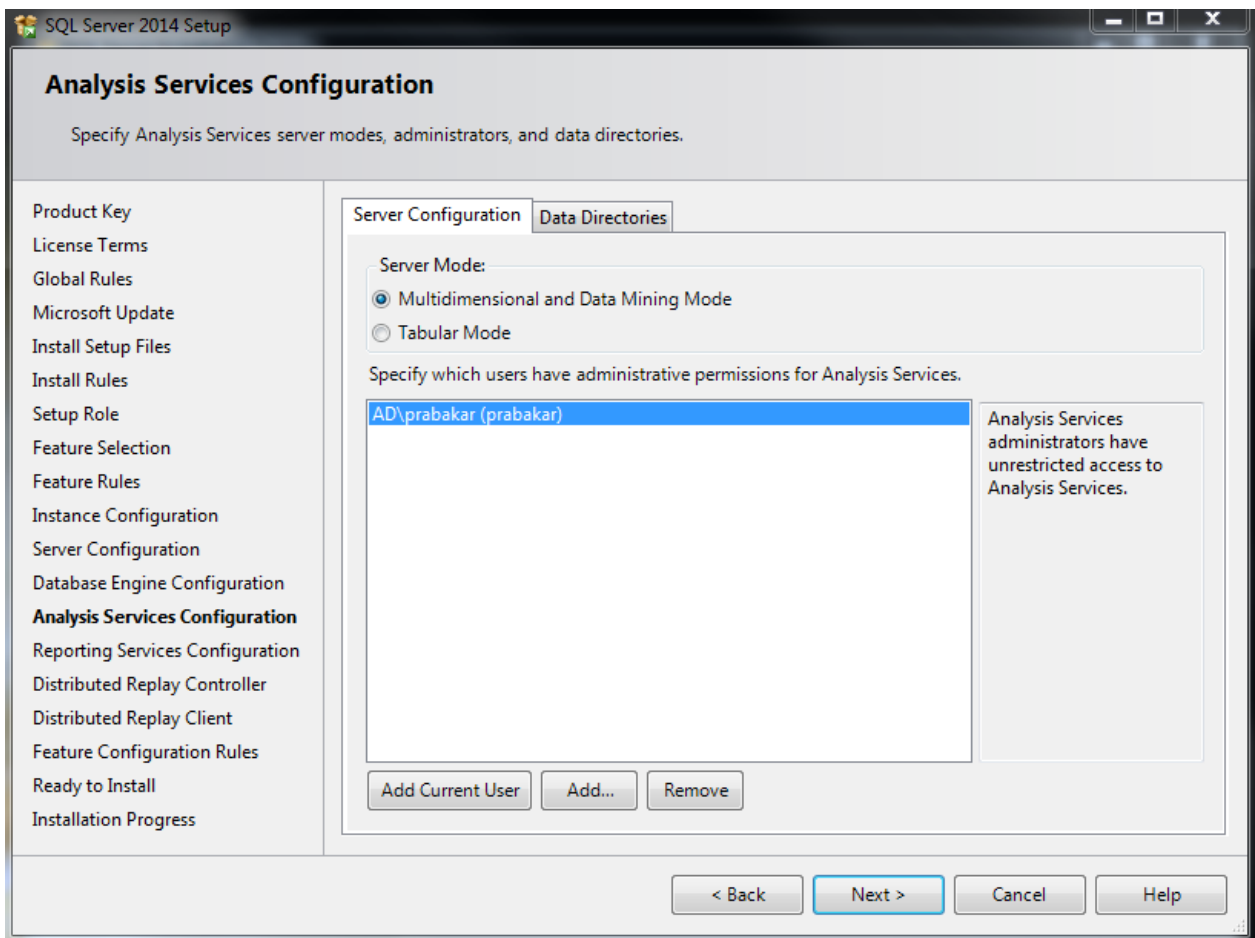




Enter the Account Name for all (not grayed) services as “NT AUTHORITY\SYSTEM” and choose “Automatic” only for SQL Server database Engine and SQL Server Browser.



Remember this system administrator (sa) password for future access.



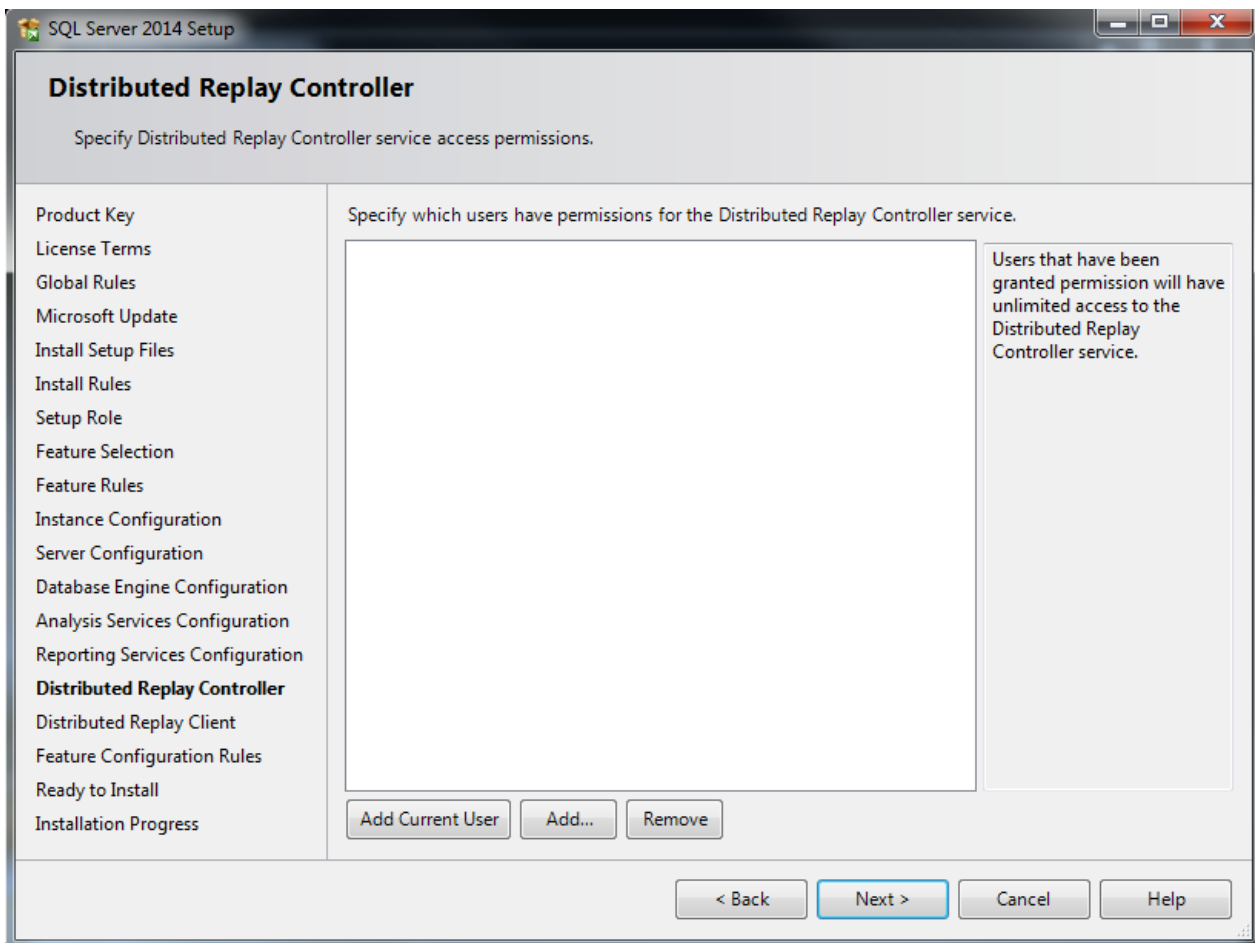
SQL Server 2014 Setup

Reporting Services Configuration

Specify the Reporting Services configuration mode.

<ul style="list-style-type: none">Product KeyLicense TermsGlobal RulesMicrosoft UpdateInstall Setup FilesInstall RulesSetup RoleFeature SelectionFeature RulesInstance ConfigurationServer ConfigurationDatabase Engine ConfigurationAnalysis Services ConfigurationReporting Services Configura...Distributed Replay ControllerDistributed Replay ClientFeature Configuration RulesReady to InstallInstallation Progress	<p>Reporting Services Native Mode</p> <ul style="list-style-type: none"><input checked="" type="radio"/> Install and configure. Installs and configures the report server in native mode. The report server is operational after setup completes.<input type="radio"/> Install only. Installs the report server files. After installation, use Reporting Services Configuration Manager to configure the report server for native mode. <p>Reporting Services SharePoint Integrated Mode</p> <ul style="list-style-type: none"><input checked="" type="radio"/> Install only. Installs the report server files. After installation use SharePoint Central Administration to complete the configuration. Verify the SQL Server Reporting Services service is started and create at least one SQL Server Reporting Services service application. For more information, click Help.
--	---

< Back Next > Cancel Help



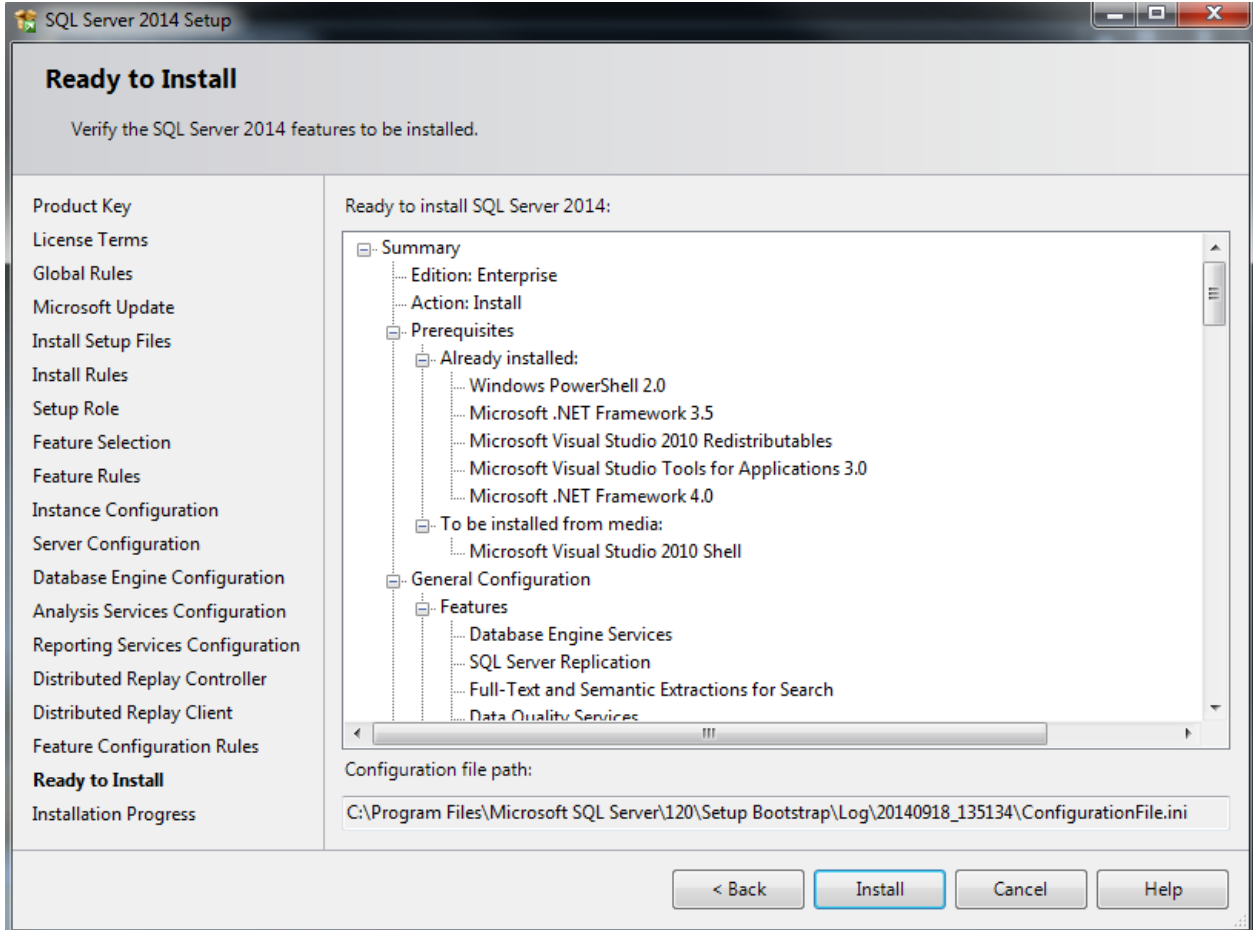
SQL Server 2014 Setup

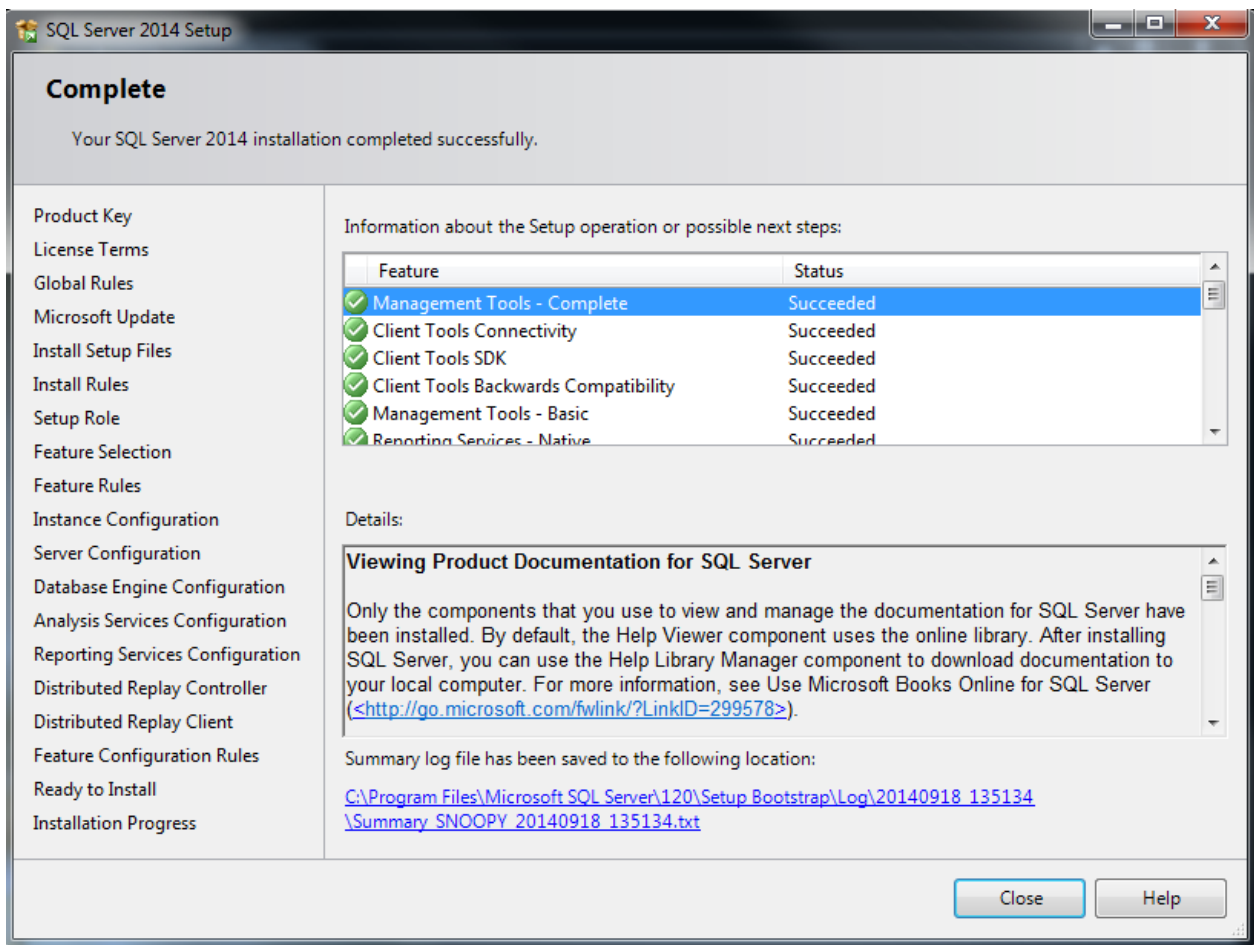
Distributed Replay Client

Specify the corresponding controller and data directories for the Distributed Replay Client.

Product Key	Specify controller machine name and directory locations.
License Terms	Controller Name: <input type="text"/>
Global Rules	Working Directory: C:\Program Files (x86)\Microsoft SQL Server\DReplayClient\WorkingDir\ <input data-bbox="1388 514 1445 546" type="button" value="..."/>
Microsoft Update	Result Directory: C:\Program Files (x86)\Microsoft SQL Server\DReplayClient\ResultDir\ <input data-bbox="1388 556 1445 588" type="button" value="..."/>
Install Setup Files	
Install Rules	
Setup Role	
Feature Selection	
Feature Rules	
Instance Configuration	
Server Configuration	
Database Engine Configuration	
Analysis Services Configuration	
Reporting Services Configuration	
Distributed Replay Controller	
Distributed Replay Client	
Feature Configuration Rules	
Ready to Install	
Installation Progress	

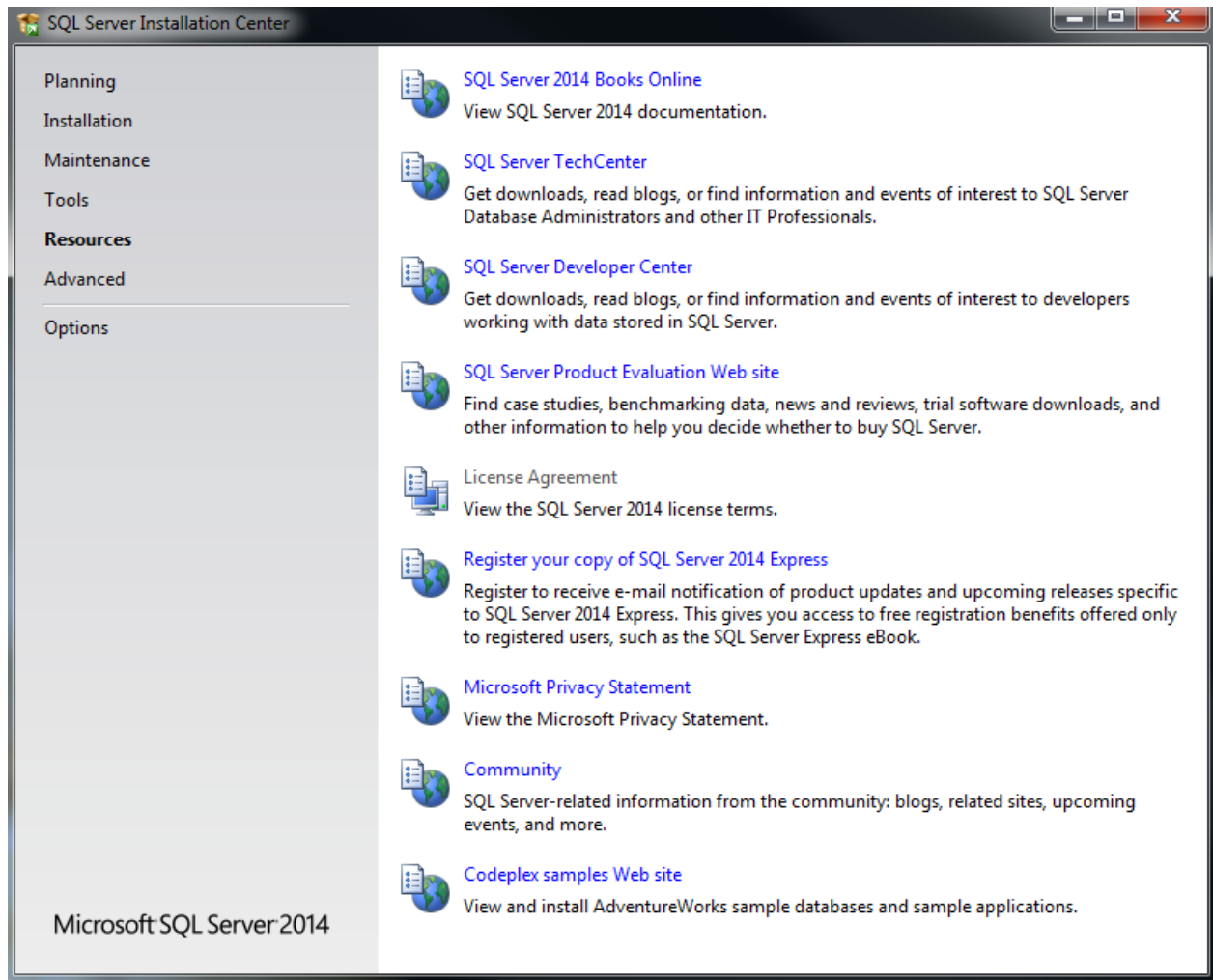
< Back Next > Cancel Help





Click on “Close” to complete the installation

Online resources:



Advanced installations:

